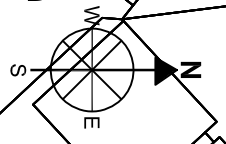


This line measures 100mm on original A3 paper



Title:- Great Break, Welwyn Garden City - proposed parking improvements - Option A

- Key:-
- proposed parking area
 - proposed footway
 - existing handstand and crossover
 - repositioned existing Advisory Disabled Bay
 - existing hedgerow to be trimmed back to boundary

Scale - 1:500 on A3
 Drawn - 08/04/2020
 By - Parking Services-TH
 Drawing - 1 of 1

© Crown Copyright All rights reserved Welwyn Hatfield
 Borough Council License No. LA 100019547 2020